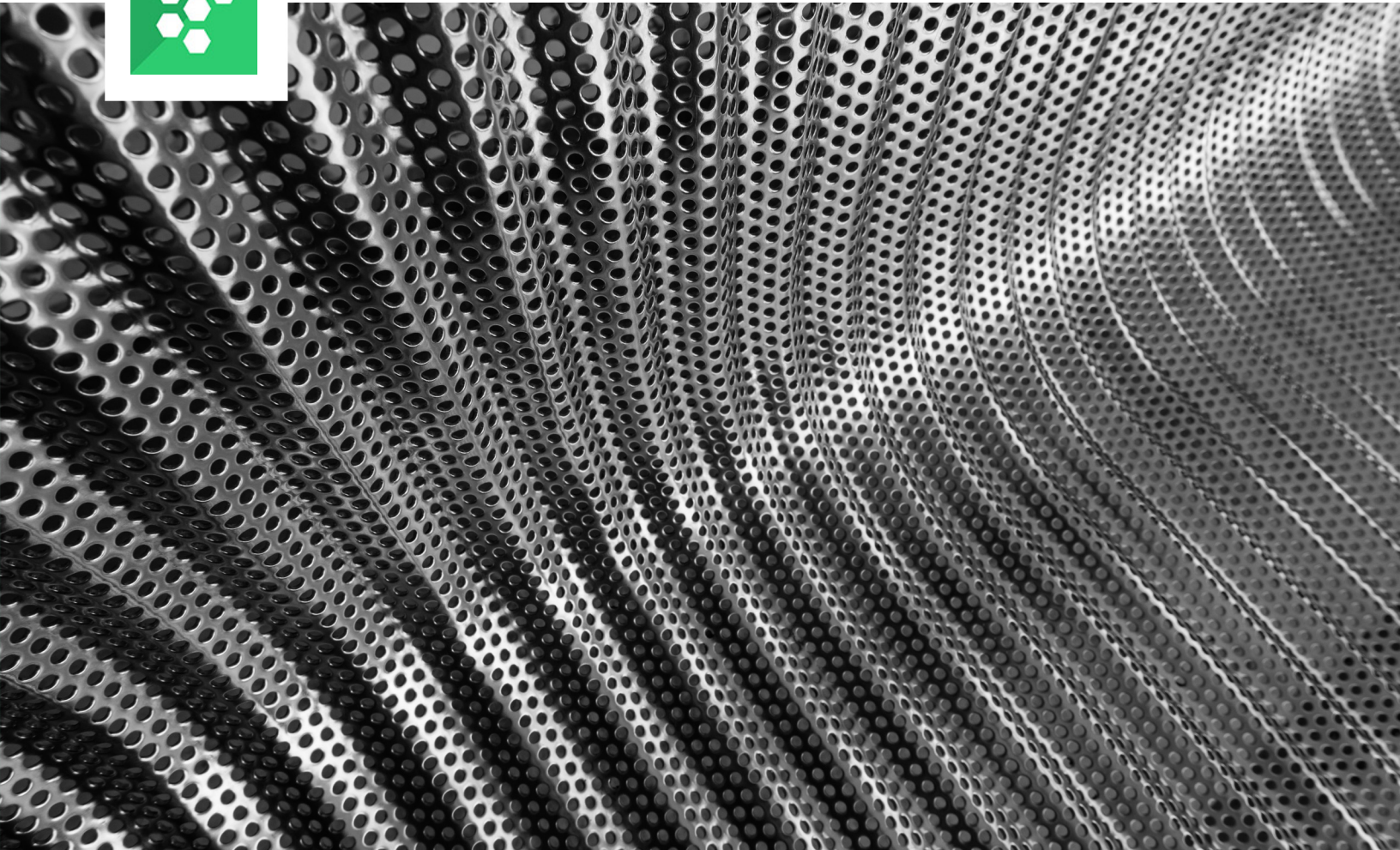


# The perfect partner for single applications



## **CLEMEX VISION LITE**

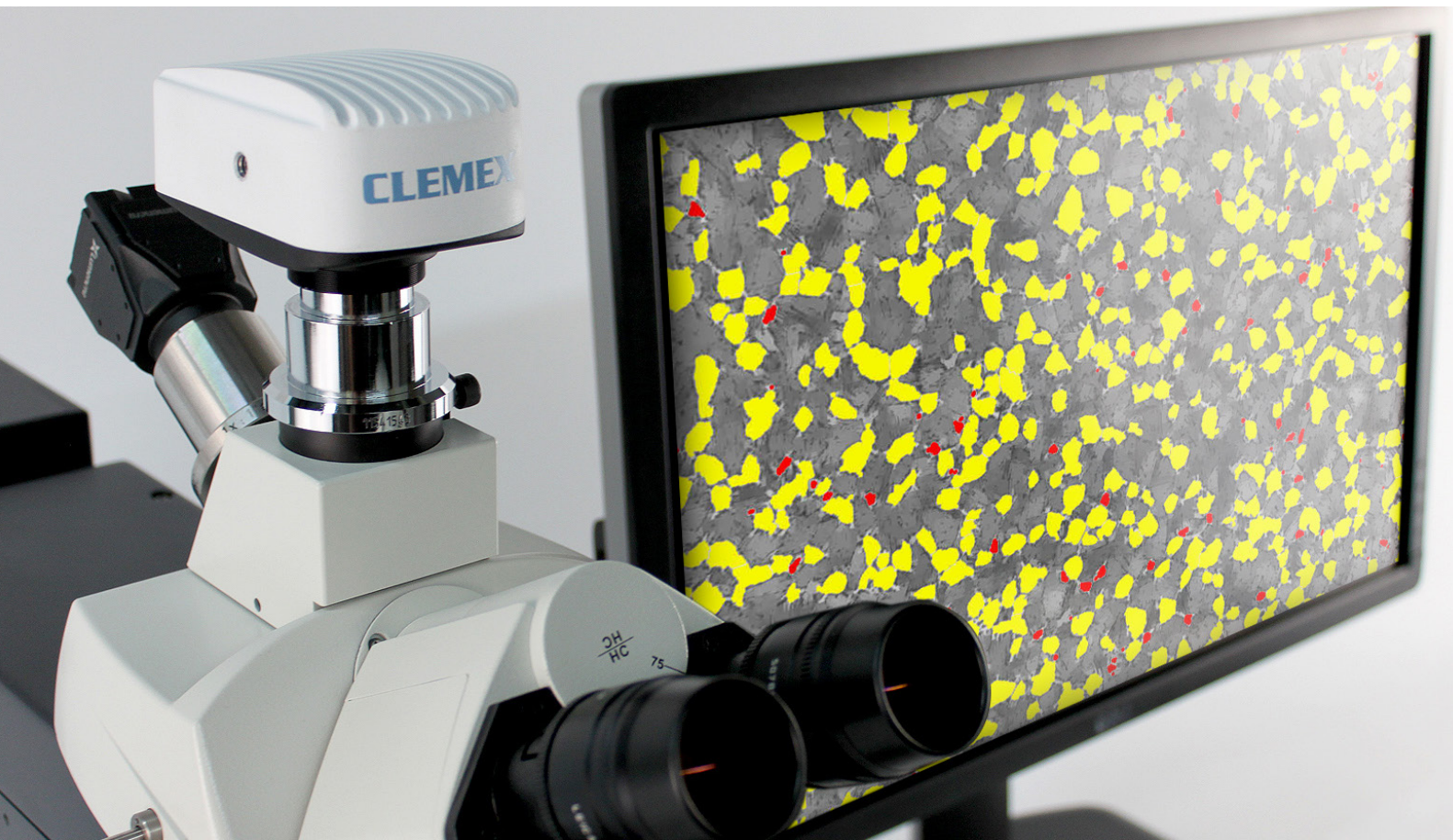
Modular systems to help you reach standard compliance faster

### Single applications

Combine Clemex Vision Lite with one or more Application Modules to perform the analysis of your choice.

### Standard compliant

Supported international standards include ASTM E 112, ASTM E 930, and ASTM E 1382.



## Understanding your challenges

### A faster way to get results

Optional Application Modules are available for analyses such as particle size, grain size, phase area percent, and coating thickness where phases of interest are distinct and easy to identify.

### Easy to learn software

With its adaptable interface and pre-programmed single touch solutions you will find our software easy to use from day one.

### International standards compliance

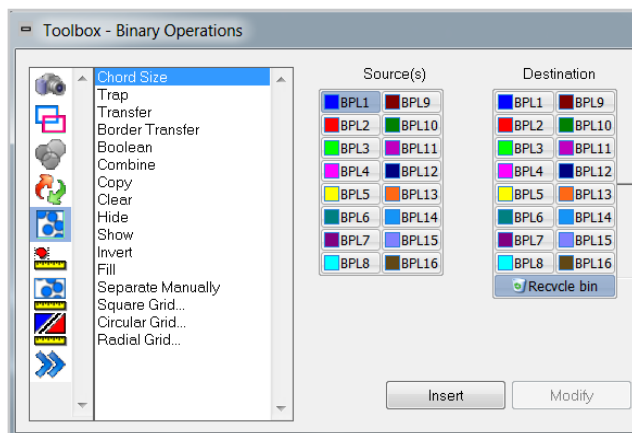
Choose from our pre-programmed solutions for your ASTM, ISO, DIN or IEST standards or ask our team to find a custom solution for your analysis.

### An affordable solution

Clemex Vision Lite is an affordable yet flexible solution for labs seeking to maintain quality under the restraint of a budget.

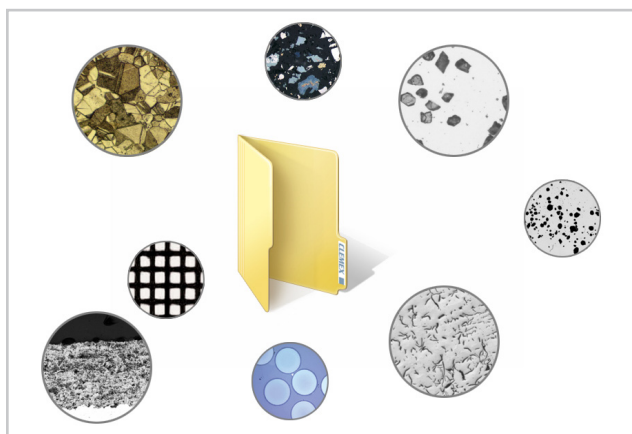
# The perfect partner for single applications

Clemex Vision Lite is ideally suited to repetitive applications which can be easily analyzed with our optional Application Modules. Together with these pre-built routines, the abridged version of Clemex Vision PE offers you the tools you need to analyze, measure and produce standardized reports. It presents a competitive option for labs seeking a simplified yet automated solution.



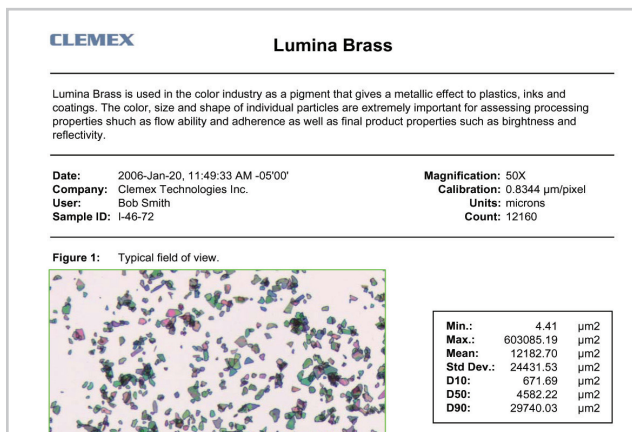
## Simplified image analysis

Building an imaging routine in Clemex Vision Lite is done without any programming. Simply save a sequence of instructions chosen from our user-friendly toolbox and re-use anytime on similar samples.



## Choose from a library of existing applications

Optional Application Modules are specifically designed for less demanding analyses or single applications. These pre-built imaging routines can be fine-tuned to meet your standards.



## Build customized reports

Creating a report in MS Excel is entirely automated with the optional Report Generator module. You can include images, raw data, statistics and graphs in professional looking reports based on your criteria.

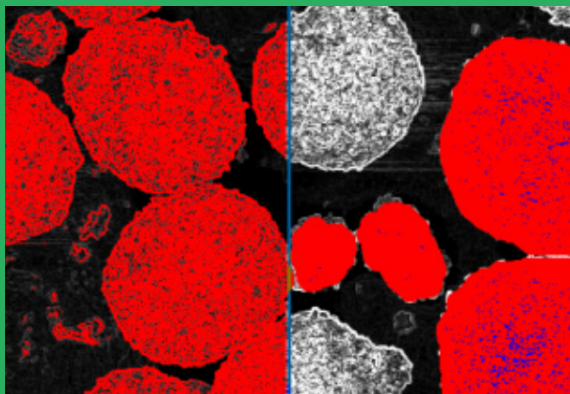
# Routine analysis in 3 easy steps

With Clemex Vision Lite's intuitive interface, you can quickly develop image analysis routines in a matter of minutes. Sequentially establish a list of image acquisition, processing, and measurement instructions by selecting them from the Toolbox and see them appear in the Routine window below. You can also use adjustable pre-built routines for analyzing phases, grain size, layers, particles, dendritic arm spacing, and custom applications.



## Step 1 - Capture images

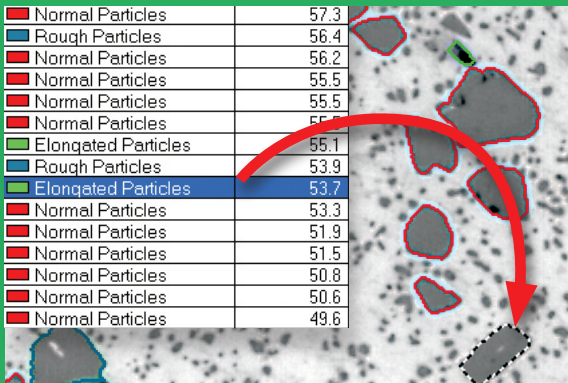
A wide range of ultra-high definition monochrome or color cameras can be used to capture images quickly and easily. Analyze your images using a live feed or save high resolution images for further analysis.



## Step 2 - Quantify images

Writing an analysis routine is just a click away, no programming required. Simply establish a list of actions taken from the Toolbox and your Routine writes itself. For frequently used analyses Clemex offers pre-built Routines that can be bought separately.

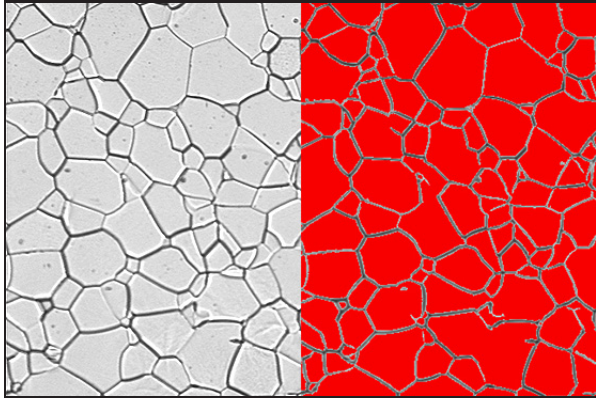
Normal Particles	57.3
Rough Particles	56.4
Normal Particles	56.2
Normal Particles	55.5
Normal Particles	55.5
Normal Particles	55.3
Elongated Particles	55.1
Rough Particles	53.9
Elongated Particles	53.7
Normal Particles	53.3
Normal Particles	51.9
Normal Particles	51.5
Normal Particles	50.8
Normal Particles	50.6
Normal Particles	49.6



## Step 3 - Manage results

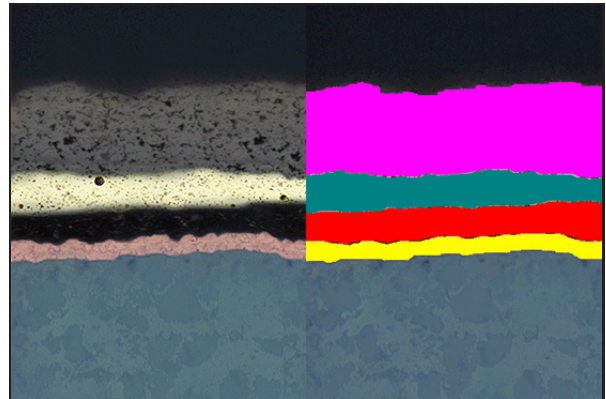
Validate your results easily within the Data Browser where each measurement is directly linked to its corresponding feature on the image. Customize printable reports to your specifications and save them in Excel or text format.

# Product Features



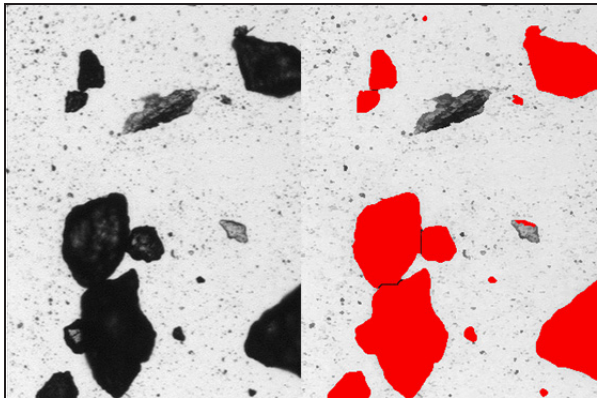
Application Module: Grain Size

Allows users to measure grain intercept, intercept counts, intersection counts, grain boundary length, and grain areas in accordance with ASTM E 112, ASTM E 930, and ASTM E 1382 methods, with validation using the Heyn method.



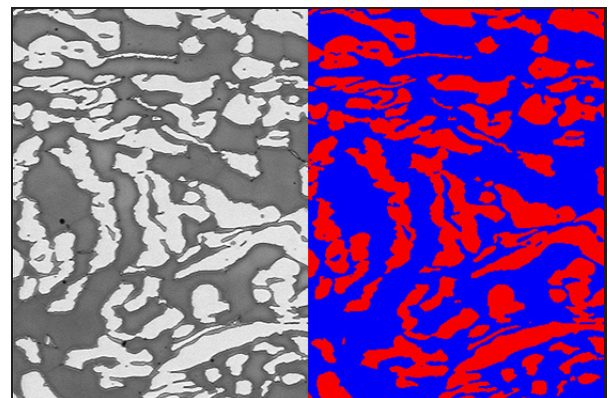
Application Module: Layer Thickness

Allows users to measure the thickness of thin surface layers on metals, alloys, carbides, and oxides (ASTM B 487). There is a range of different routines, from one layer of porous coating to multiple layers of different types of coating.



Application Module: Particle Size

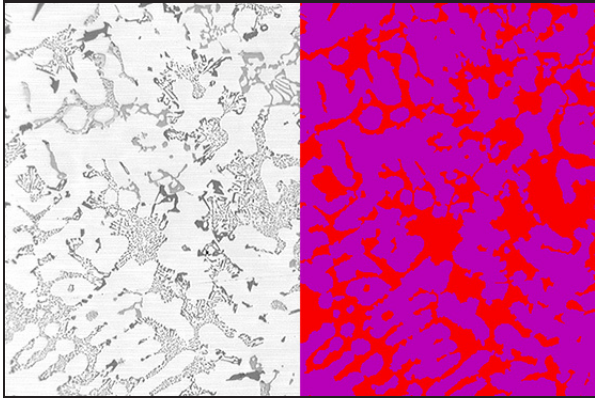
Allows users to reliably assess the size and shape of particles as small as 0.5 micron. By using optical microscopy this package offers statistical and individual data on a large sample of particles. This module contains eight different routines with examples and tutorials.



Application Module: Phase Analysis

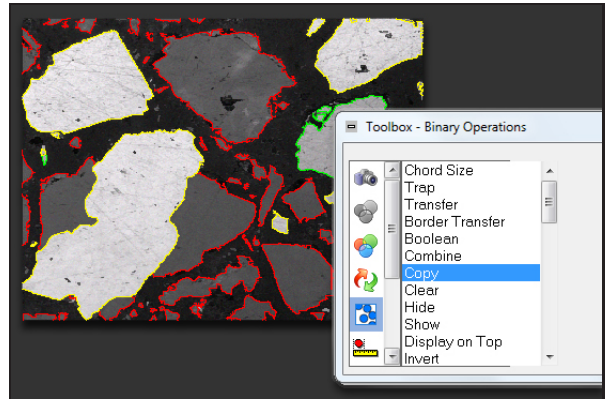
Allows users to count any number of clearly distinguishable constituents or phases within a microstructure, providing a statistical estimation of the volume fraction of different phases. Each module contains a range of different routines, from two phases in black & white to up to five phases in color.

# Product Features



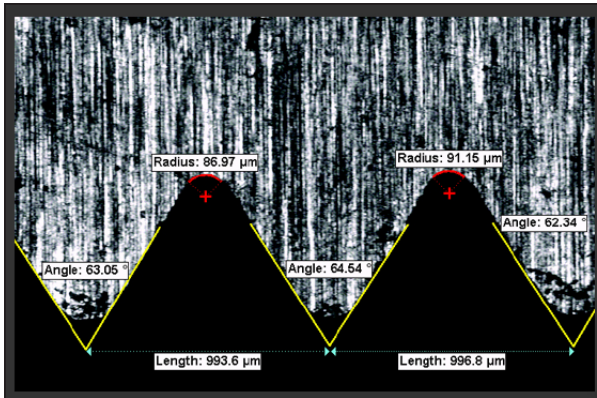
Application Module: DAS

Allows users to measure the distance between adjacent secondary arms of a dendrite. It is needed for materials with dendritic structure like cast aluminum alloys.



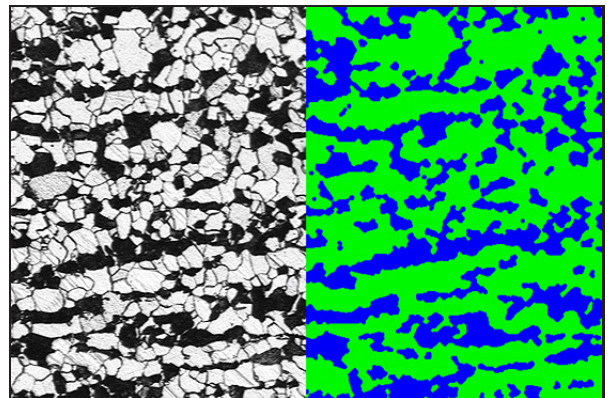
Clemex Vision Lite Toolbox

The abridged version of Clemex Vision contains enough instructions to perform simple, repetitive analyses. Advanced instructions become available for editing when using Application Modules.



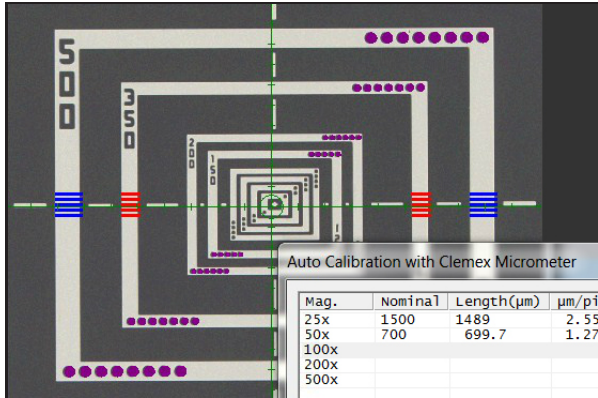
Direct Measures

Especially useful in applications such as Welding or Thread analysis, manual measurements are immediately updated in the Data Browser (built-in spreadsheet). Typical measurements include Length, Angle, Radius and Perimeter.



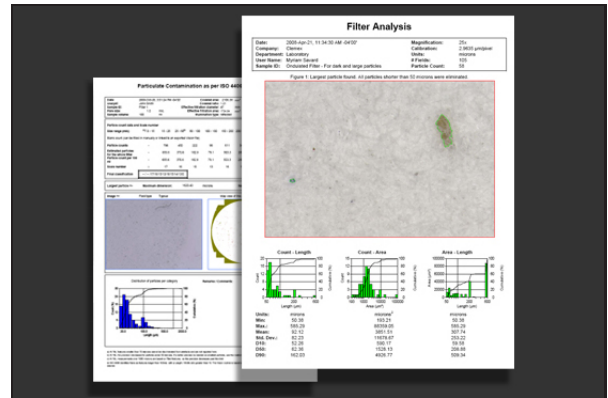
Single and Custom Applications

Have our staff develop a custom routine for you or choose from a wide variety of single pre-built routines: banding, welding, flakes, nodules, titanium structures, decarburization depth, surface roughness, inclusion ratings and more.



## NIST-Traceable Auto Calibration

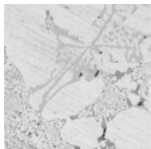
Using our NIST traceable micrometer, Clemex software automatically calibrates each lens, eliminating operator subjectivity. The system returns accurate, reproducible and traceable results.



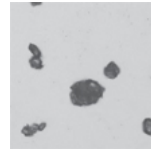
## Professional-Looking Reports

Reports are generated automatically after each analysis and can be customized to suit your needs. You can add a company logo, images taken during analysis, graphs and charts, statistics and results.

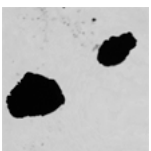
## Related Web Reports



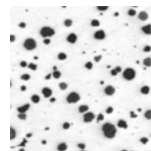
**Phase area percent in aluminum**



**Dry pharmaceutical powder**



**Metal powder particles**



**Nodularity in cast iron**

We are experts in complex and simple  
microscopic image analysis applications in:

Raw Materials

Powders

Metal Parts

Contaminants

Custom Applications

**CLEMEX**

[www.clemex.com](http://www.clemex.com)

---

Contact:

Clemex Technologies inc.

800 Guimond, Longueuil, QC, J4G 1T5, Canada

Telephone: 1.888.651.6573

[info@clemex.com](mailto:info@clemex.com) - [www.clemex.com](http://www.clemex.com)

© Copyright Clemex Technologies Inc. 06-2016